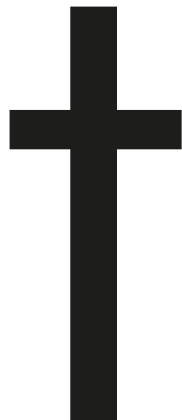




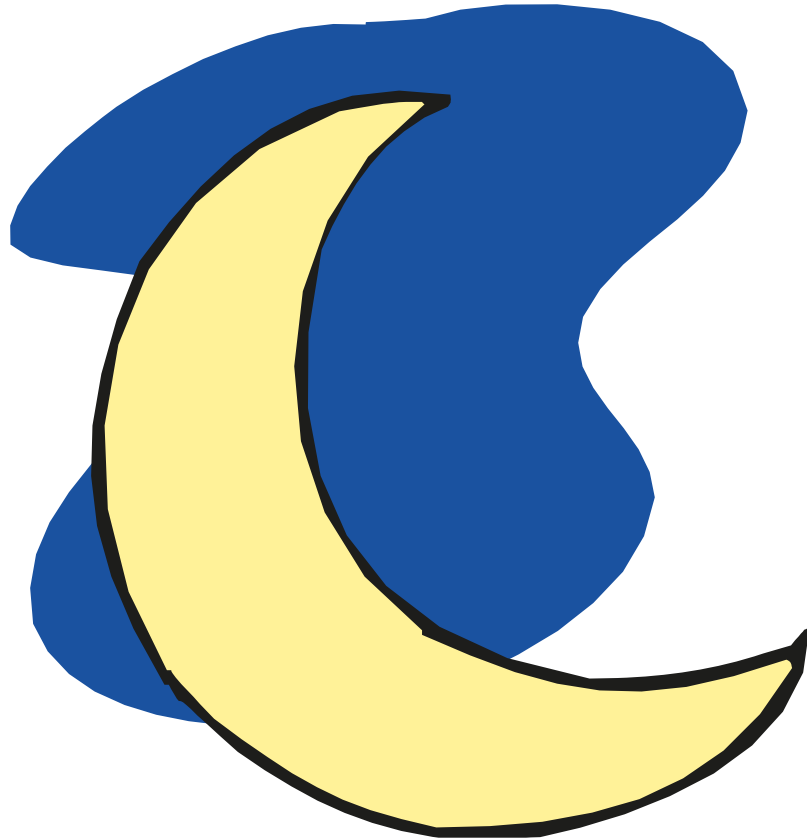
a

apple





toes



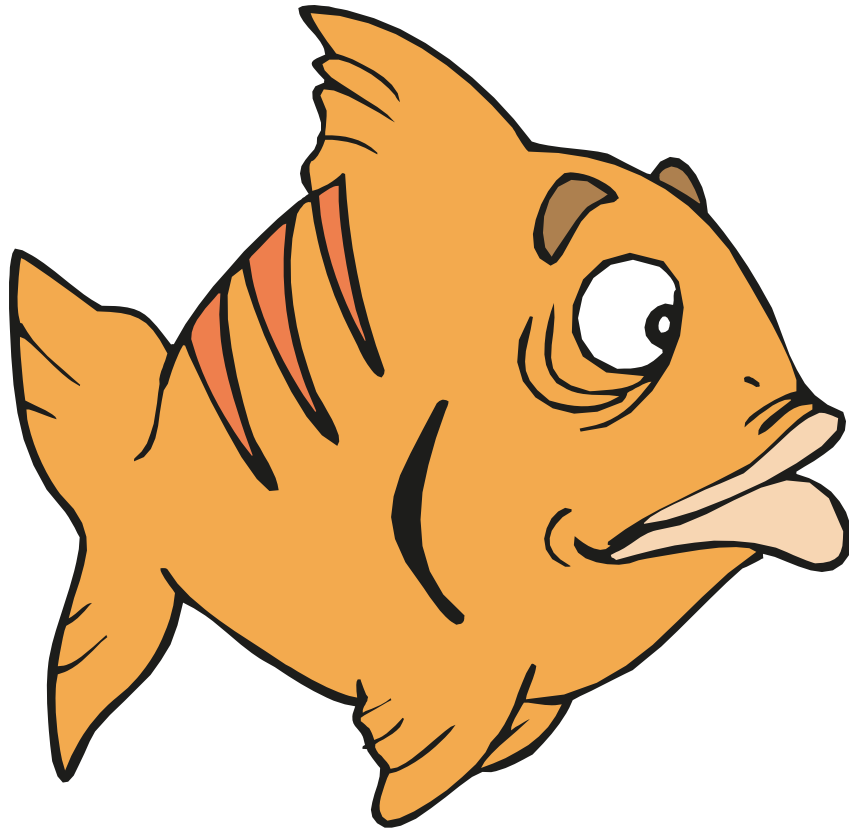
m

moon



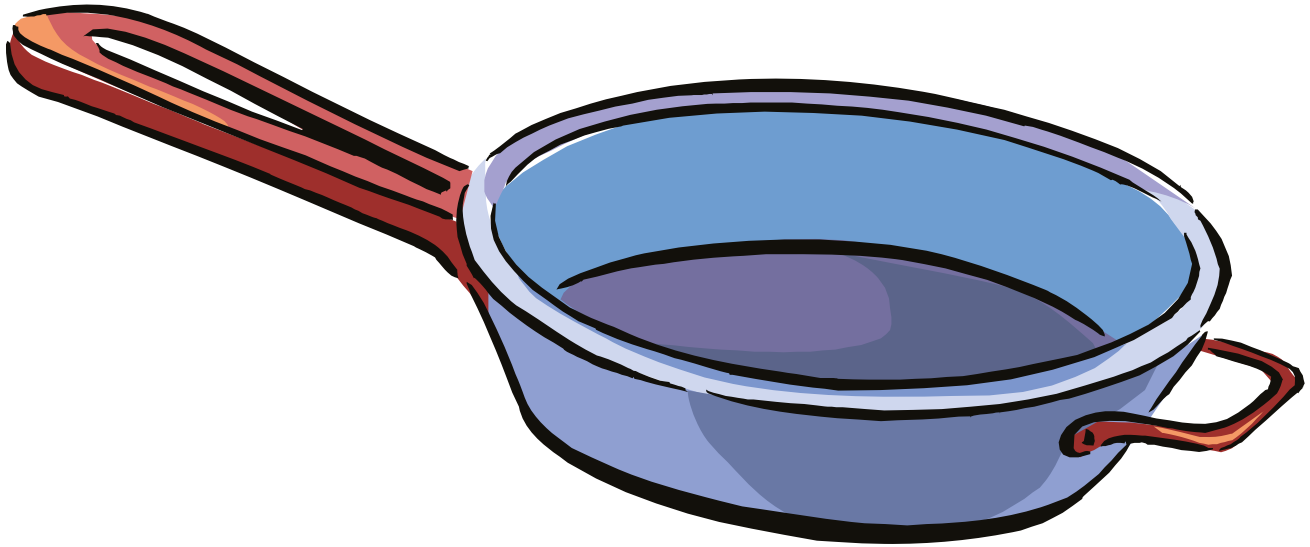
S

socks



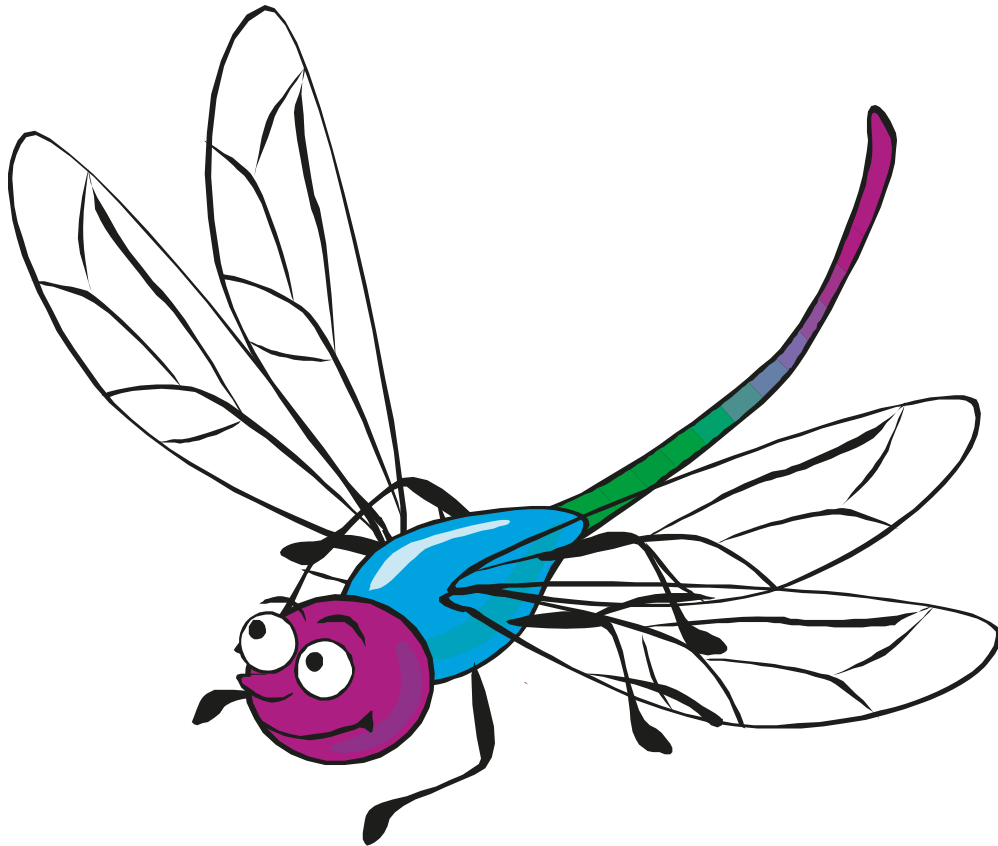
f

fish



p

pan



© Mondo Publishing 2009

i

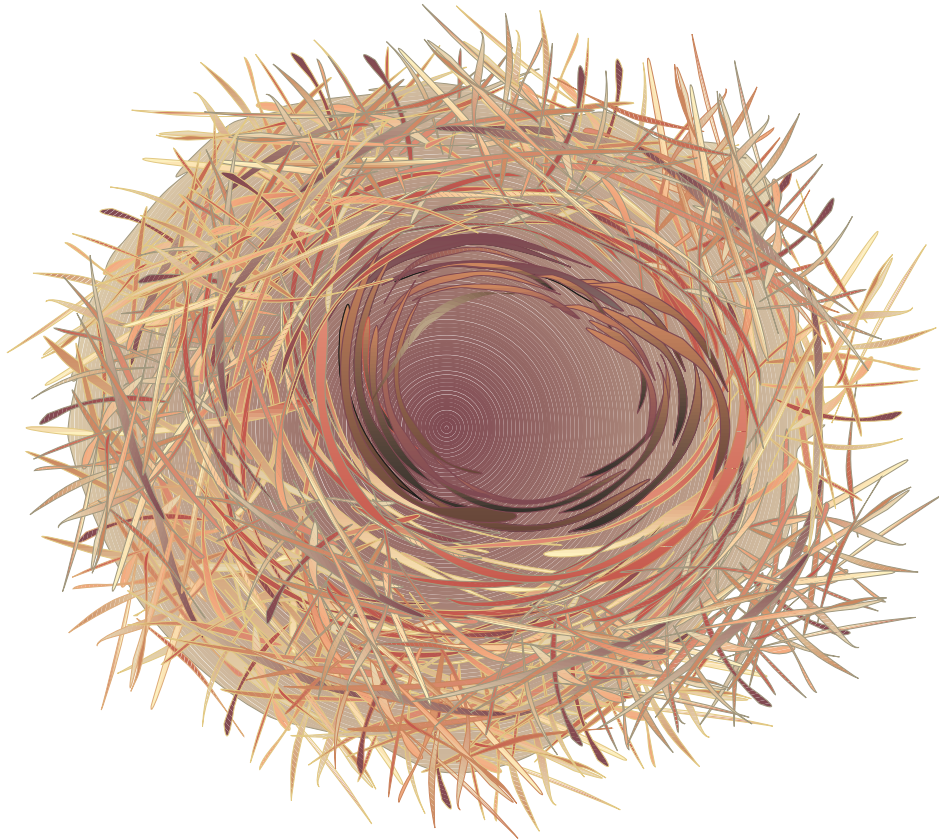
insect



© Mondo Publishing 2009

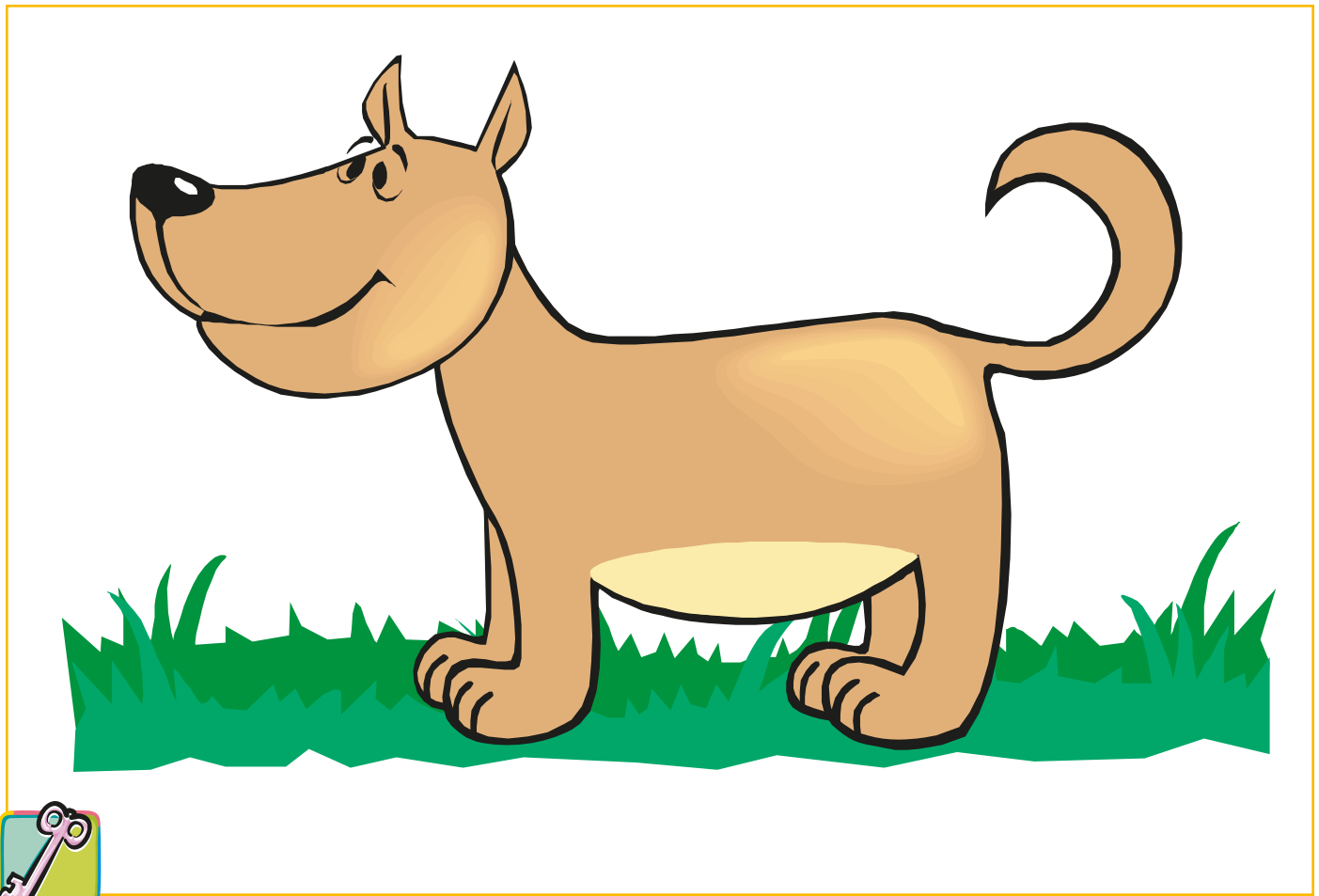
C

cat



n

nest

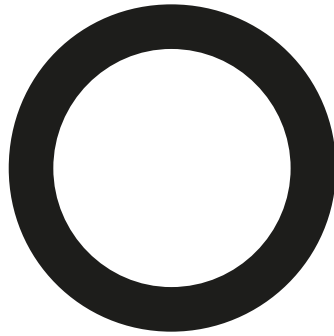


© Mondo Publishing 2009

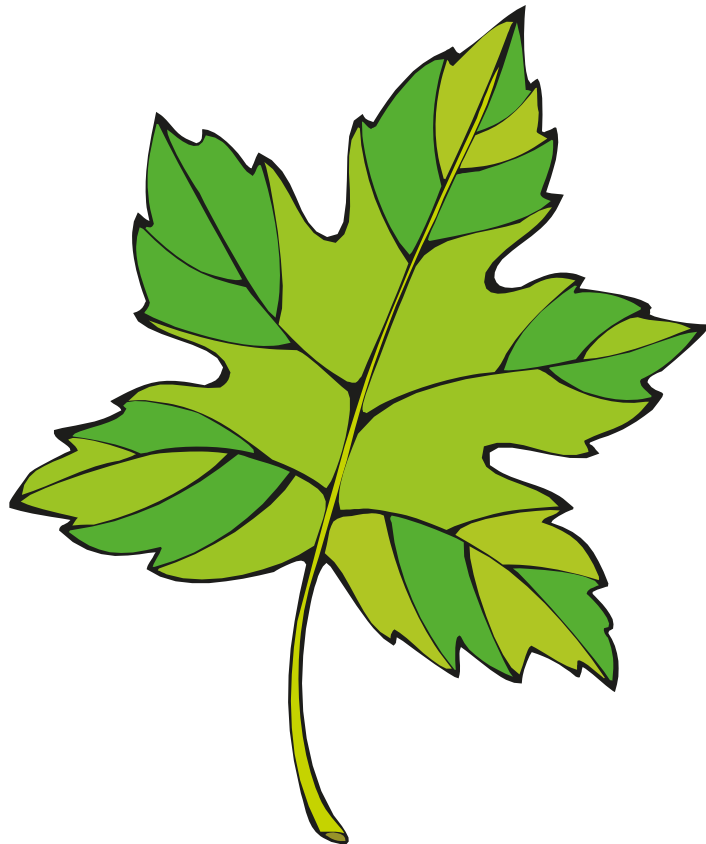
d

dog



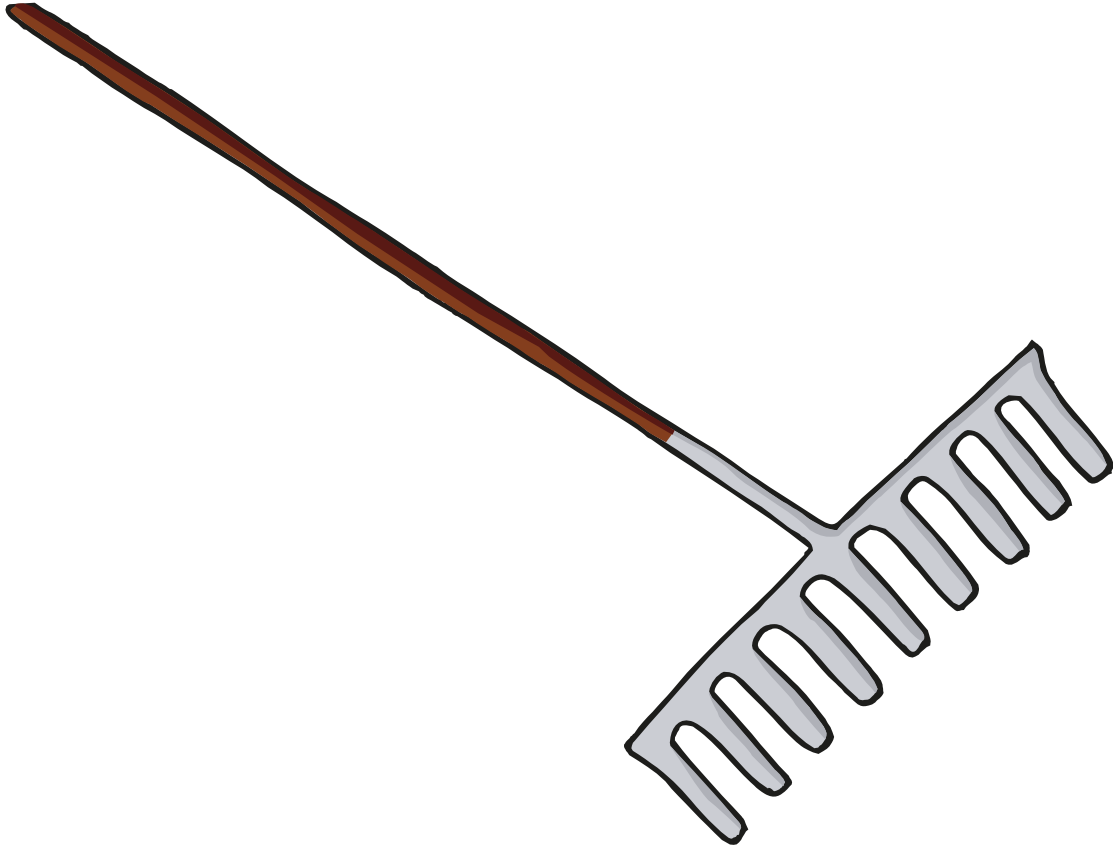


o**ctopus**



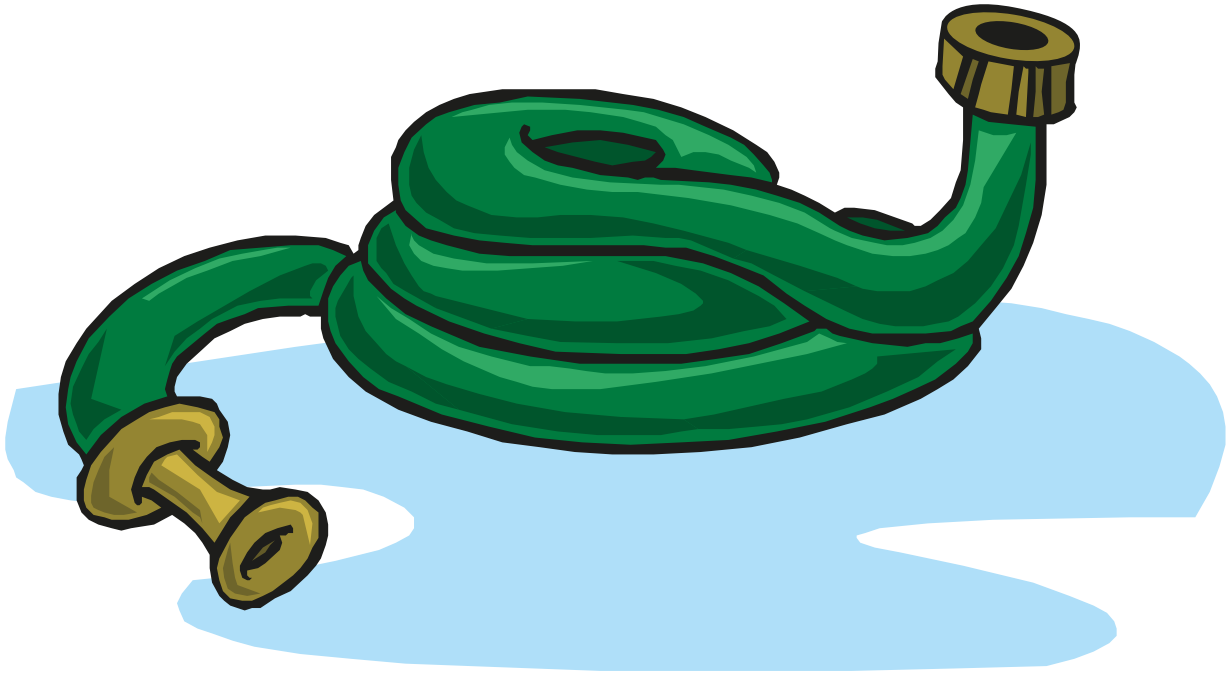


leaf



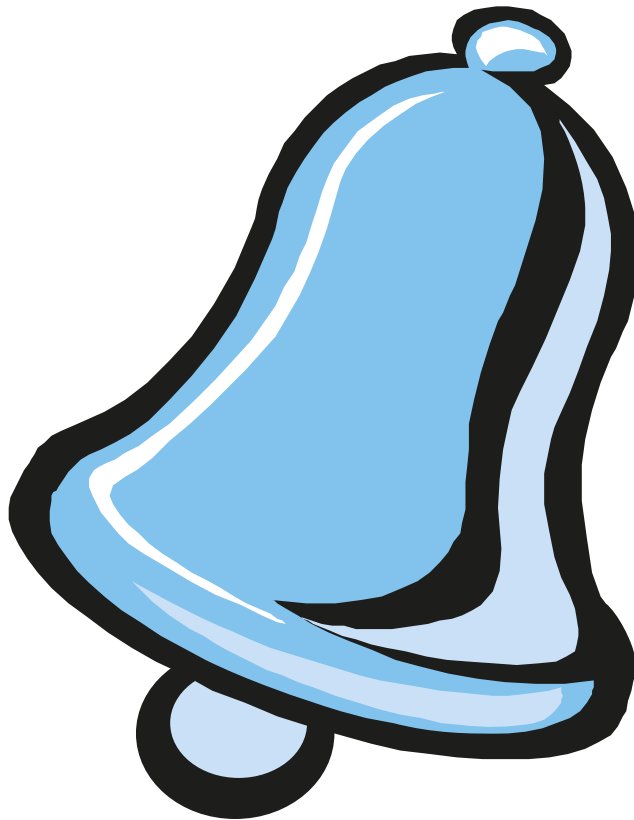
r

rake



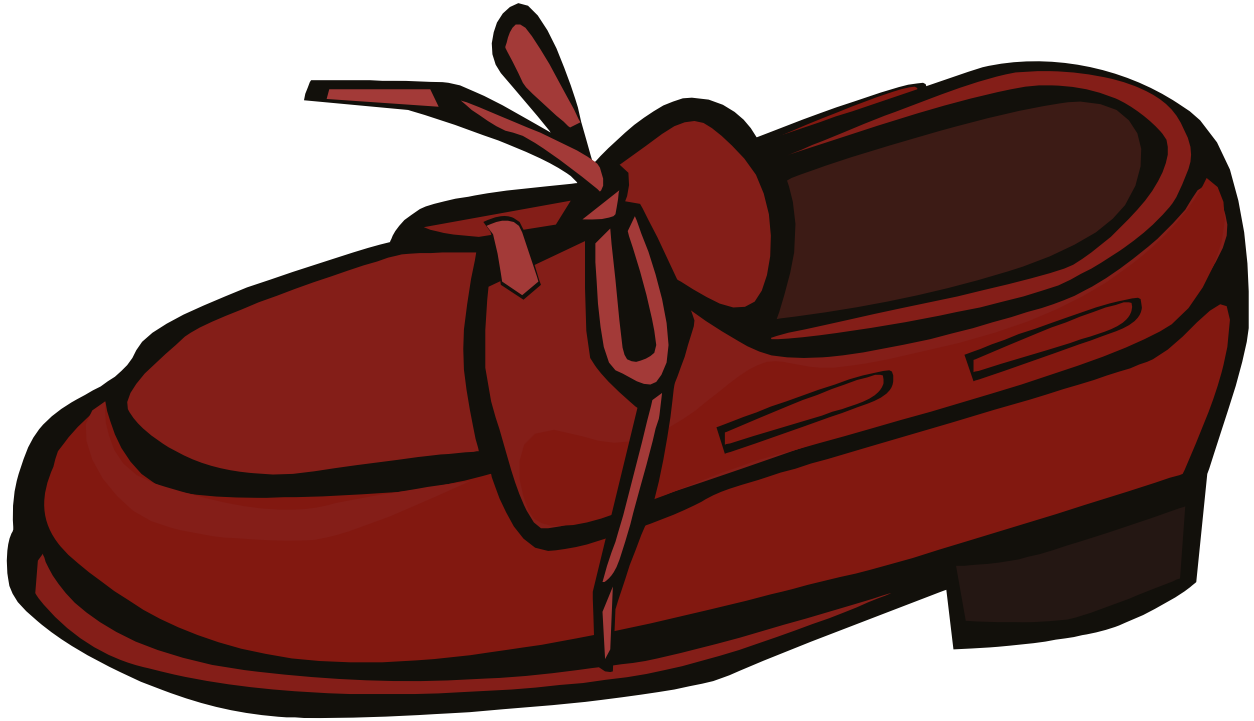
h

hose



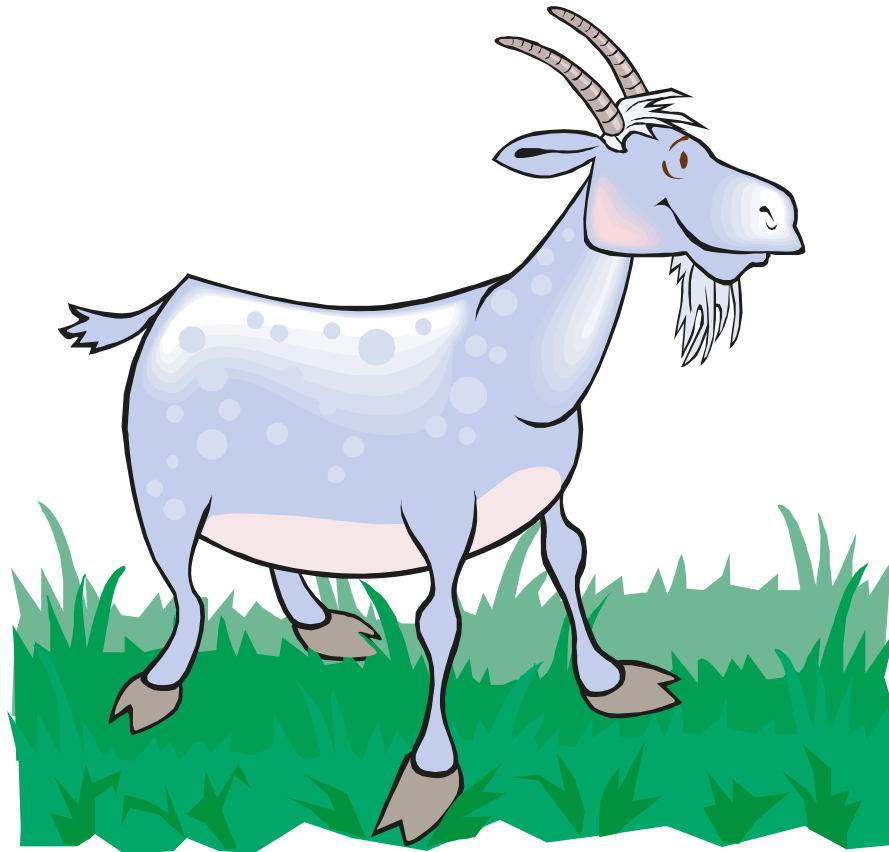
b

bell



sh

shoe



g

goat



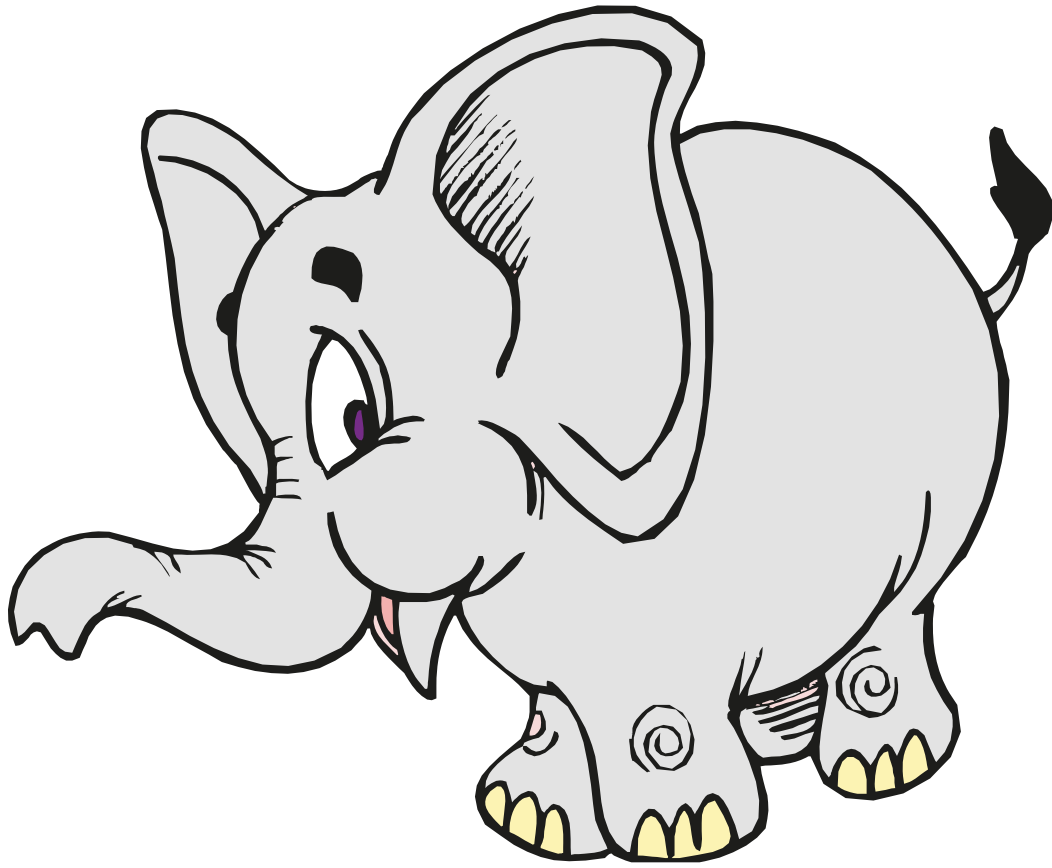
ck

clock



k

key



e

elephant



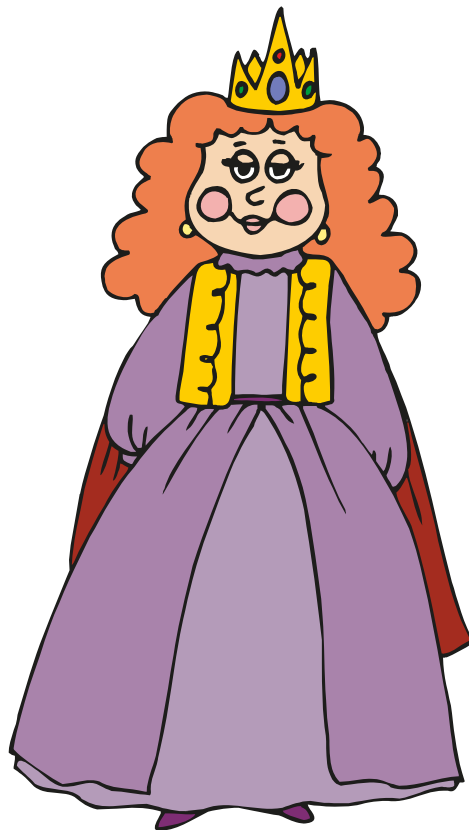
V

vest



j

jar



qu

queen



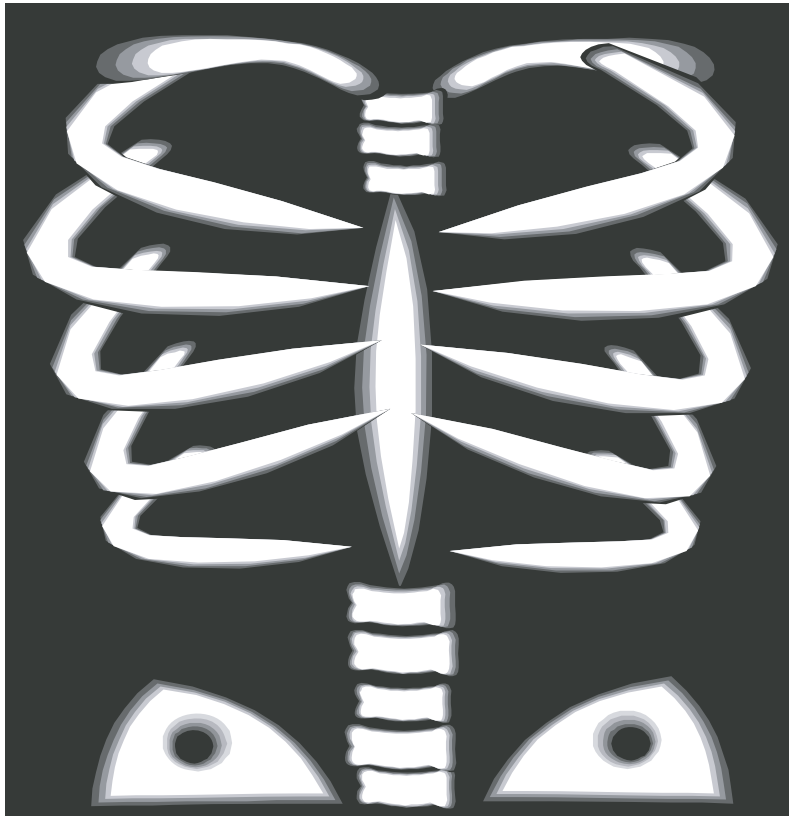
W

wagon



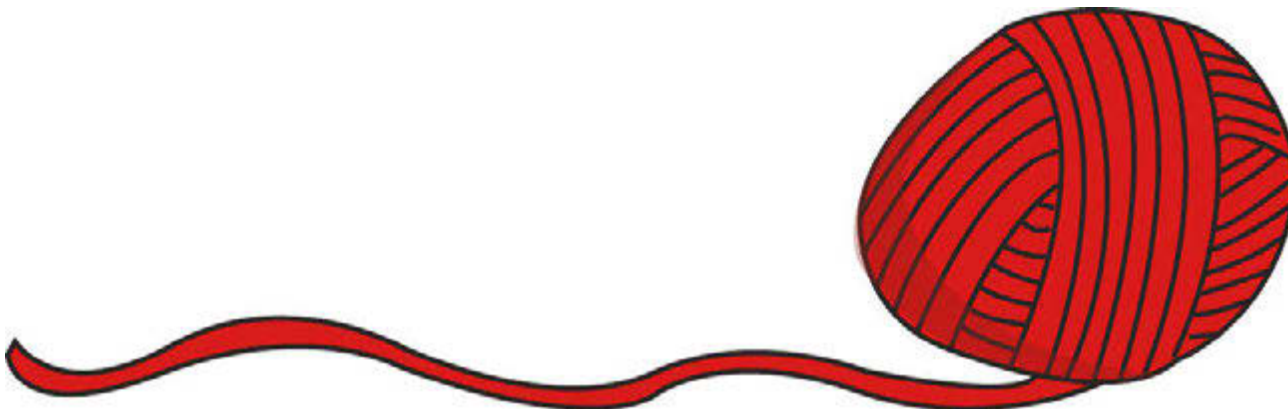
th

thumb



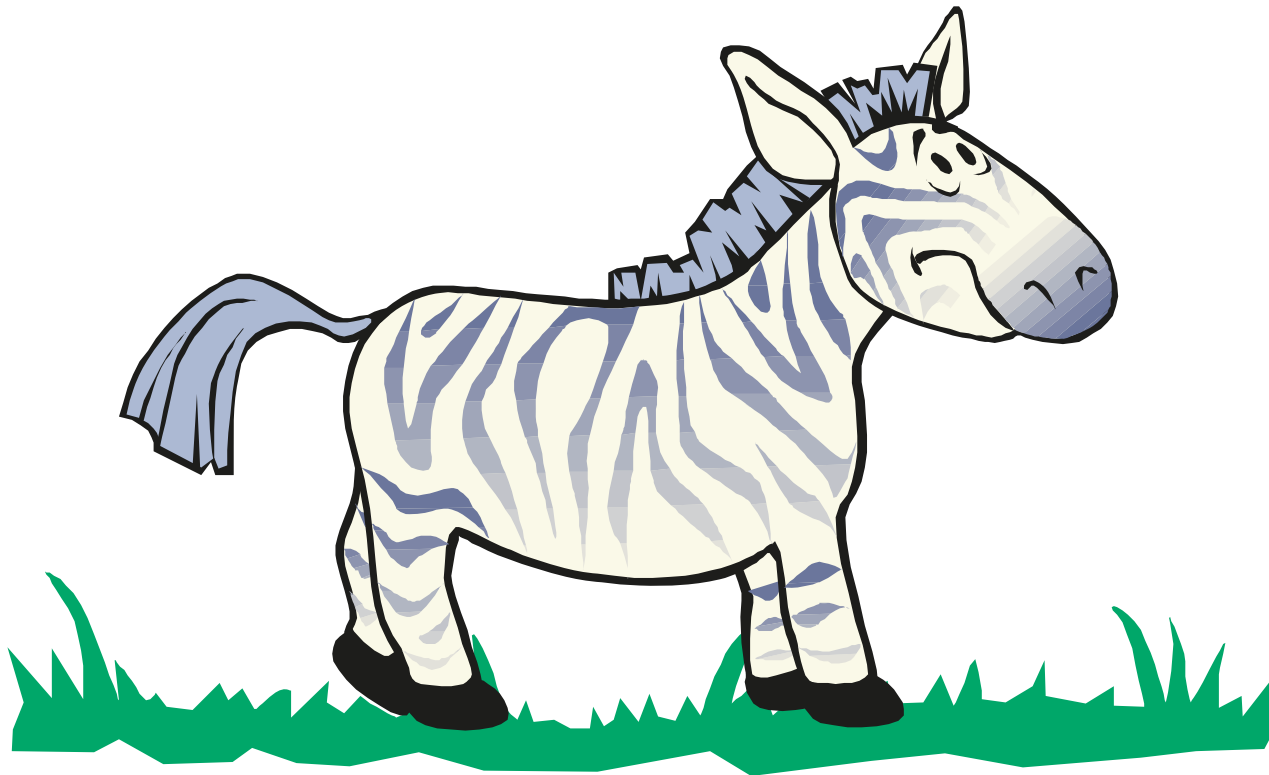
X

X-ray



Y

yarn



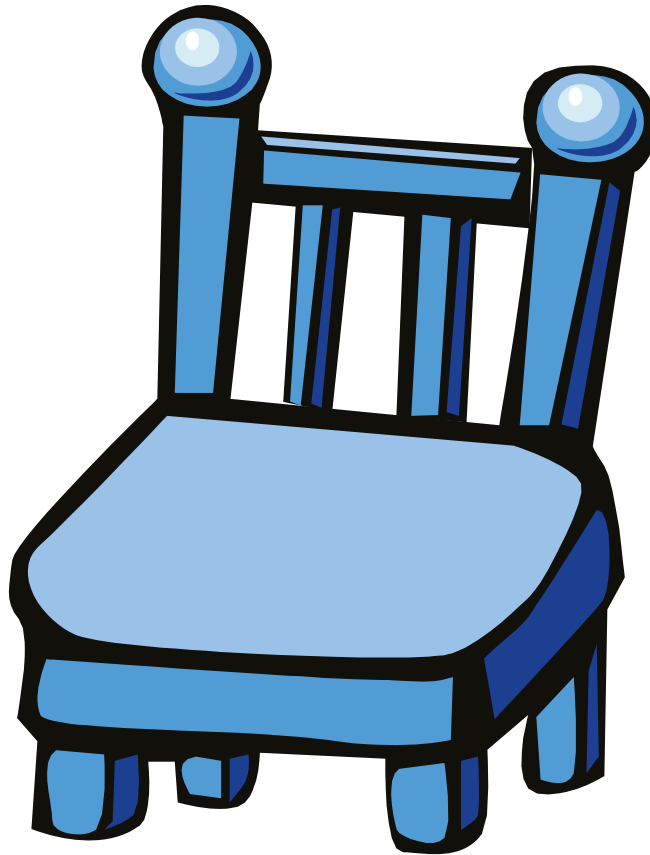
Z

zebra



u

umbrella



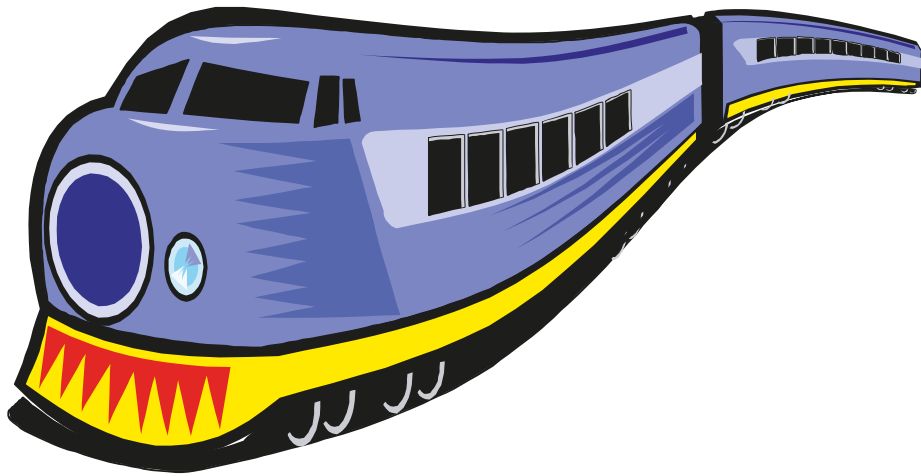
ch

chair



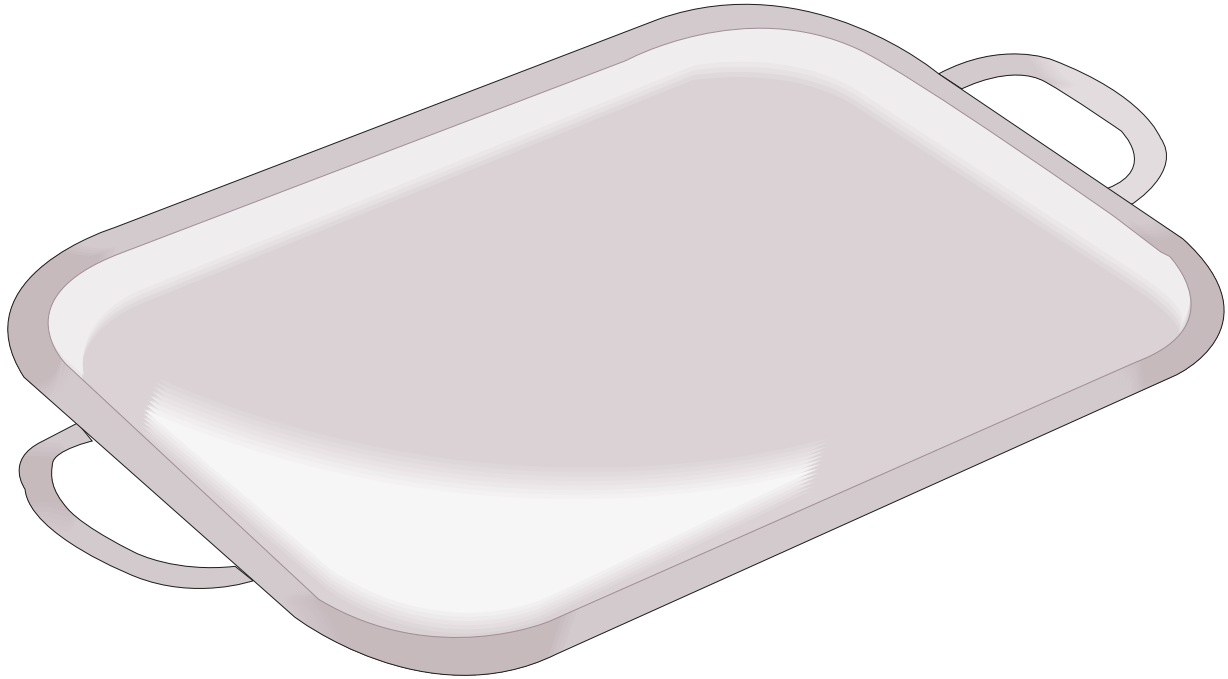
a_e

cake



di

train



ay

tray



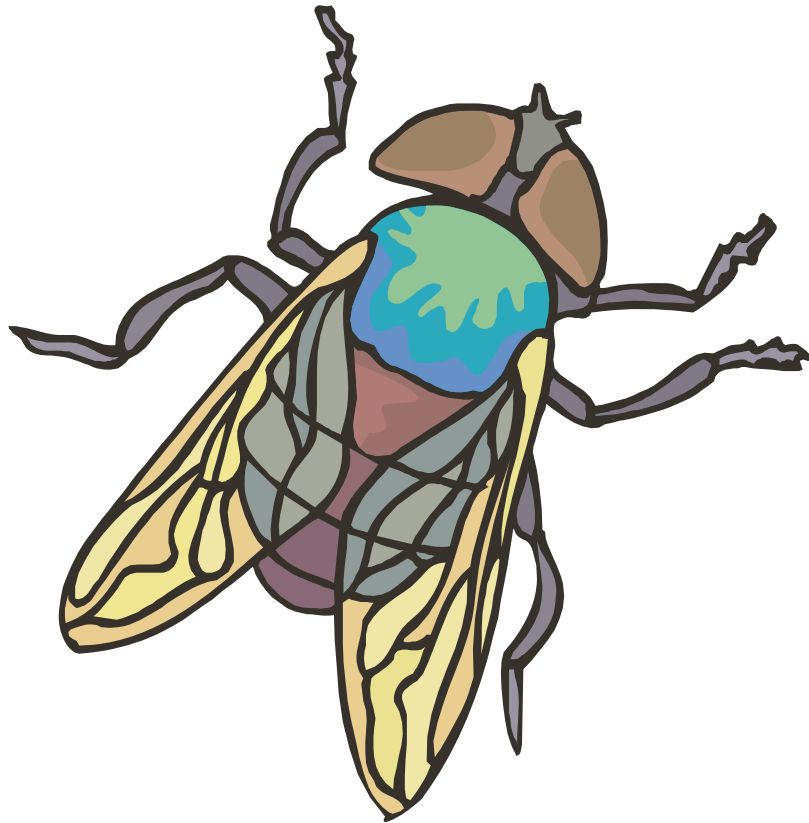
ie

bike



ie

tie



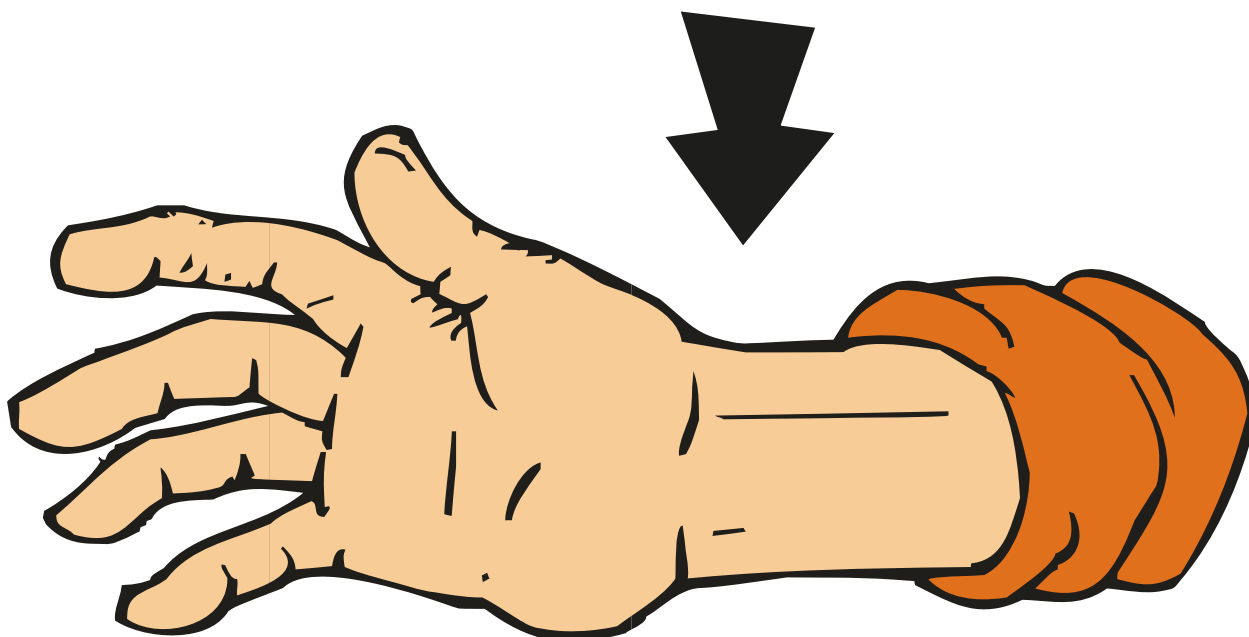
fy

fly



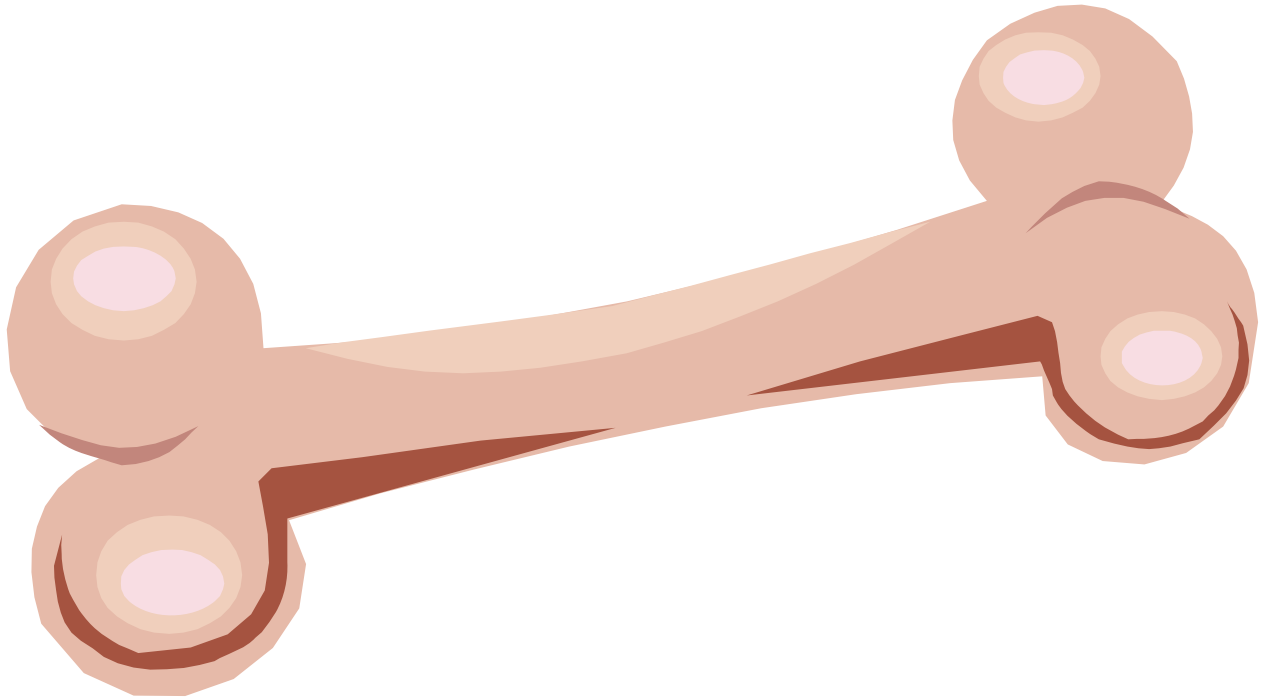
igh

lightbulb



wr

wrist



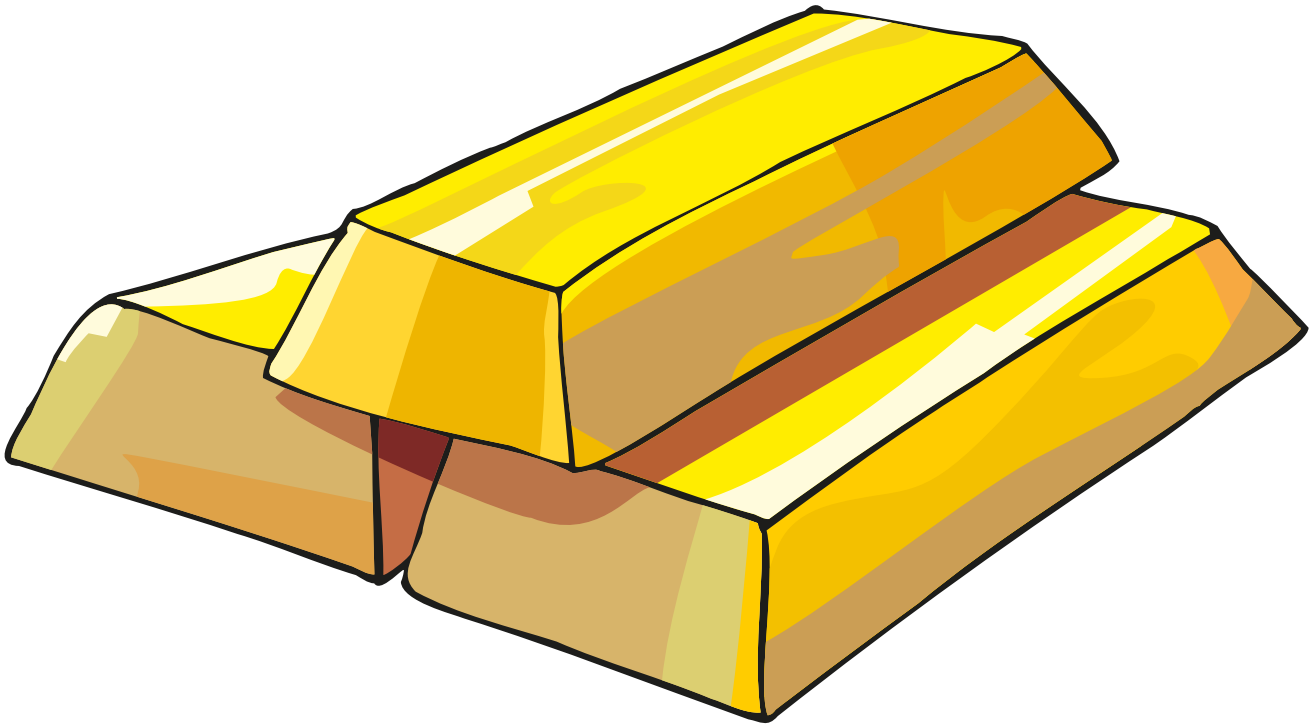
o _ e

bone



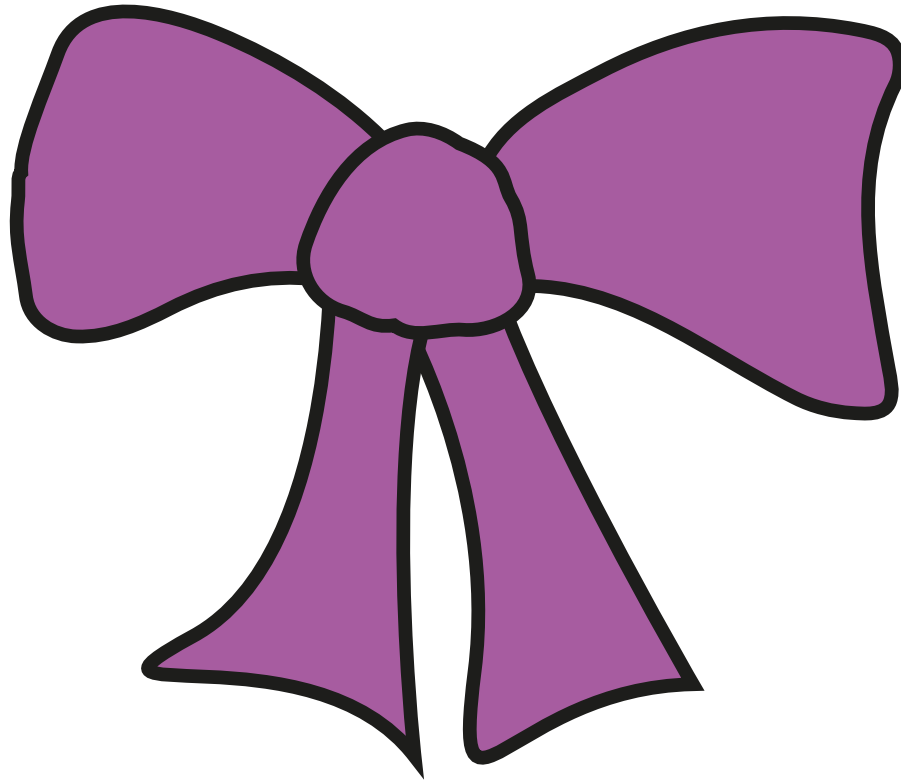
oa

boat



oi

gold



ow

bow



kn

knot



gn

sign



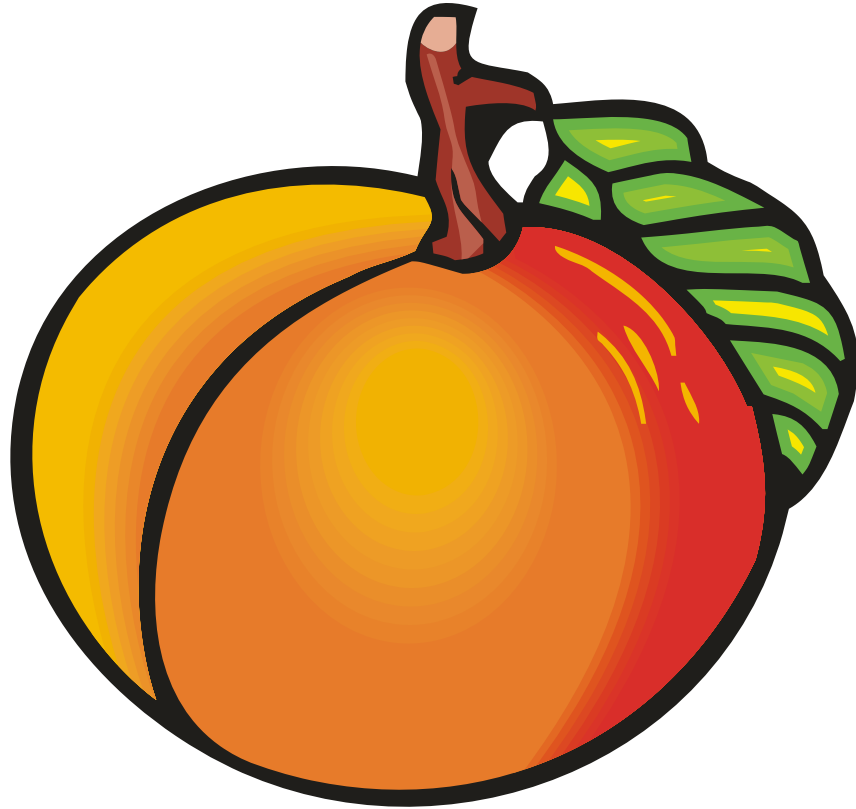
e _ e

eve



ee

feet



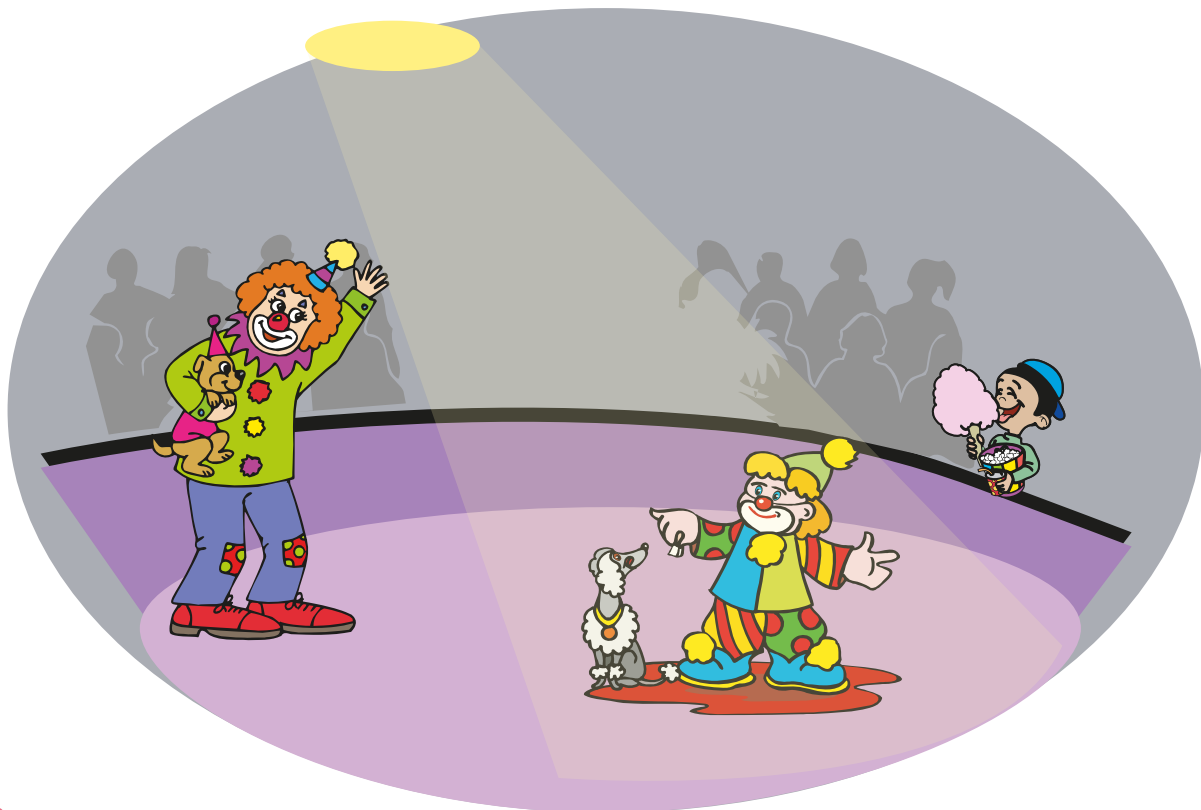
ea

peach



ce

cent



ci

circus



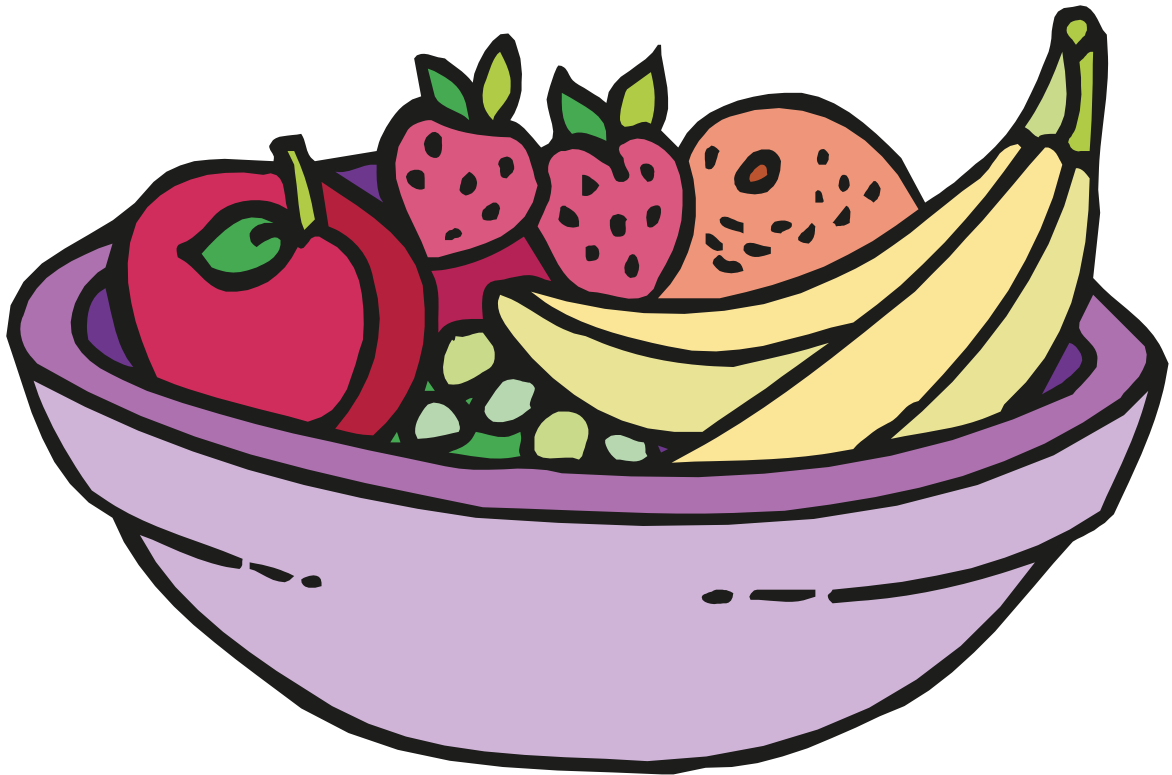
ar

star



u_e

ice cube



ui

fruit



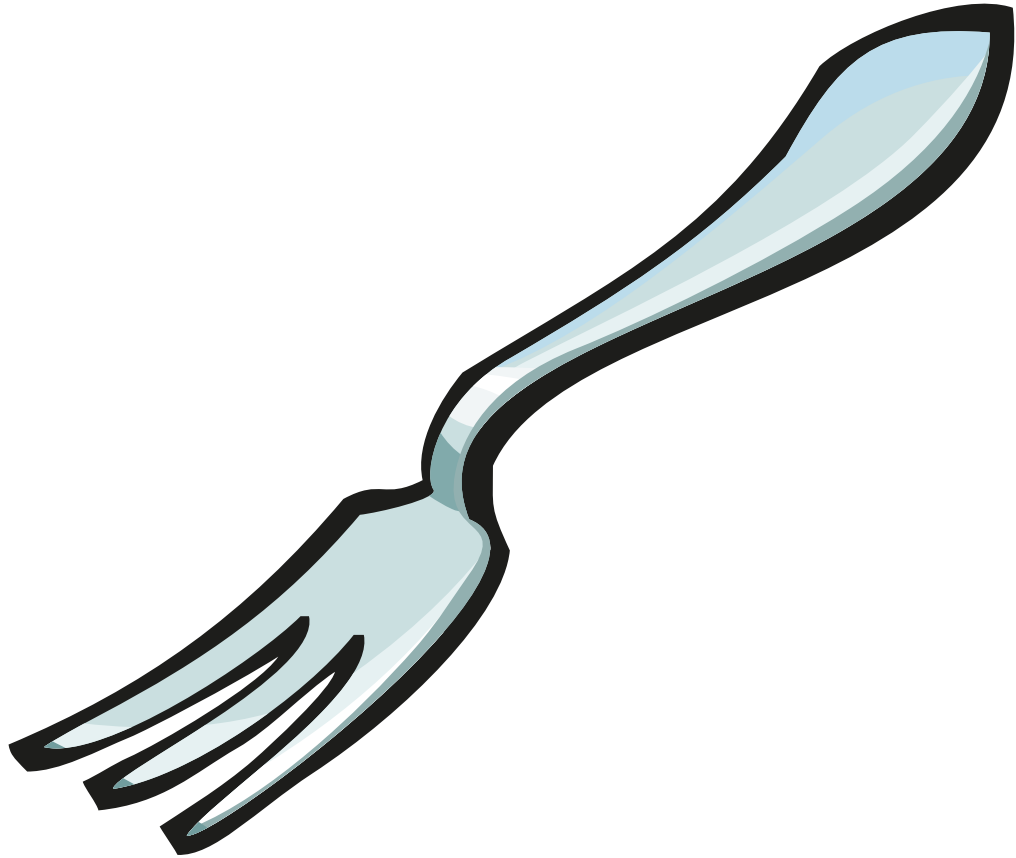
ue

blue



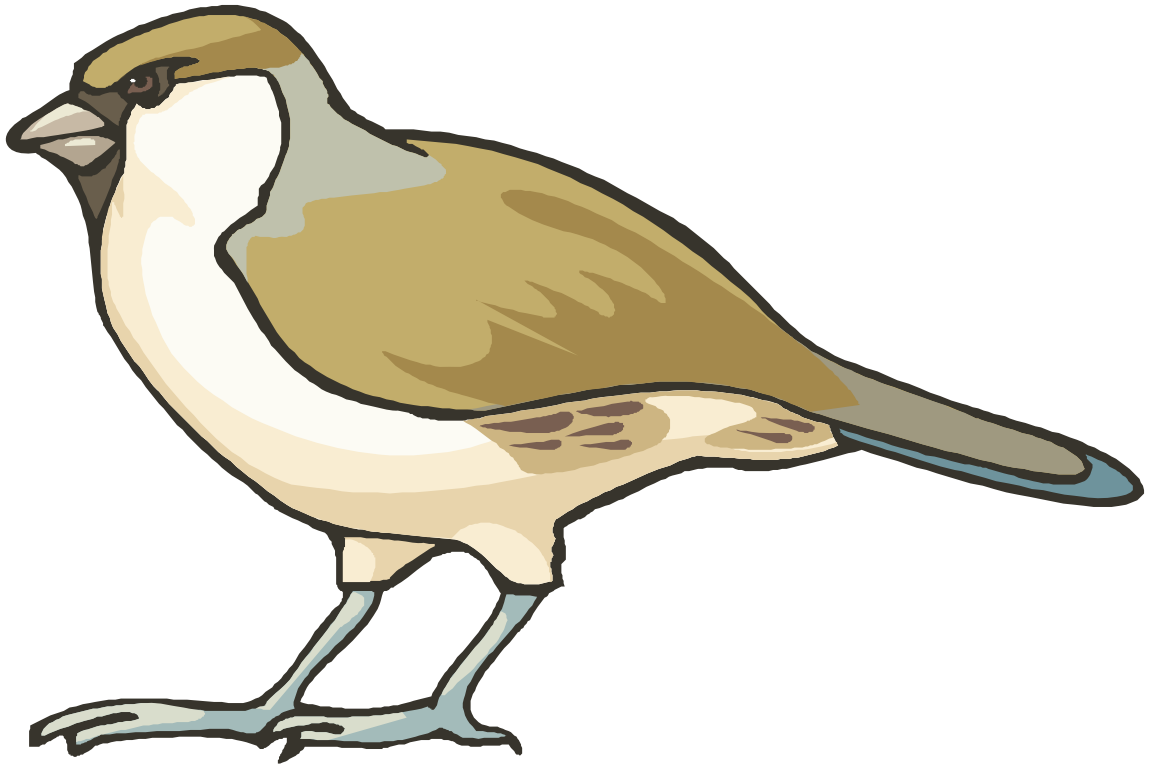
ai

salt



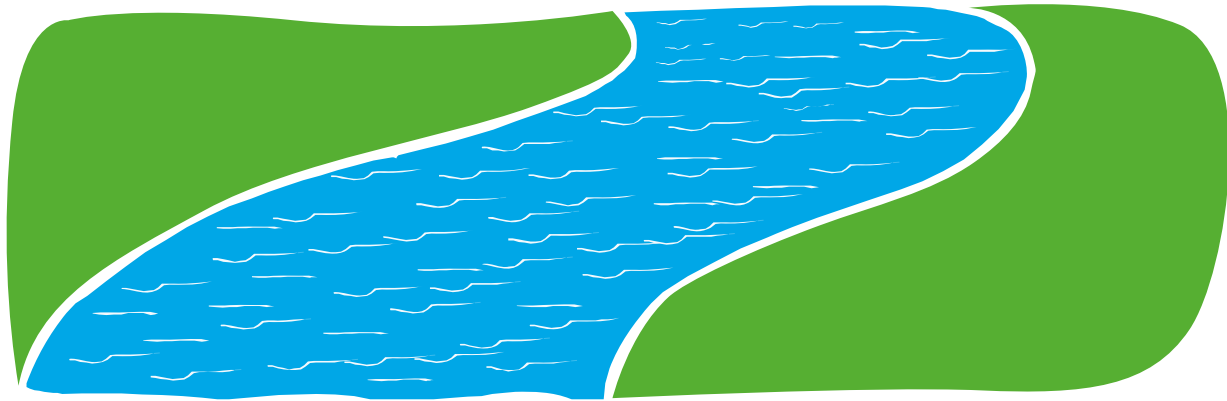
or

fork



ir

bird



er

river



ur

nurse



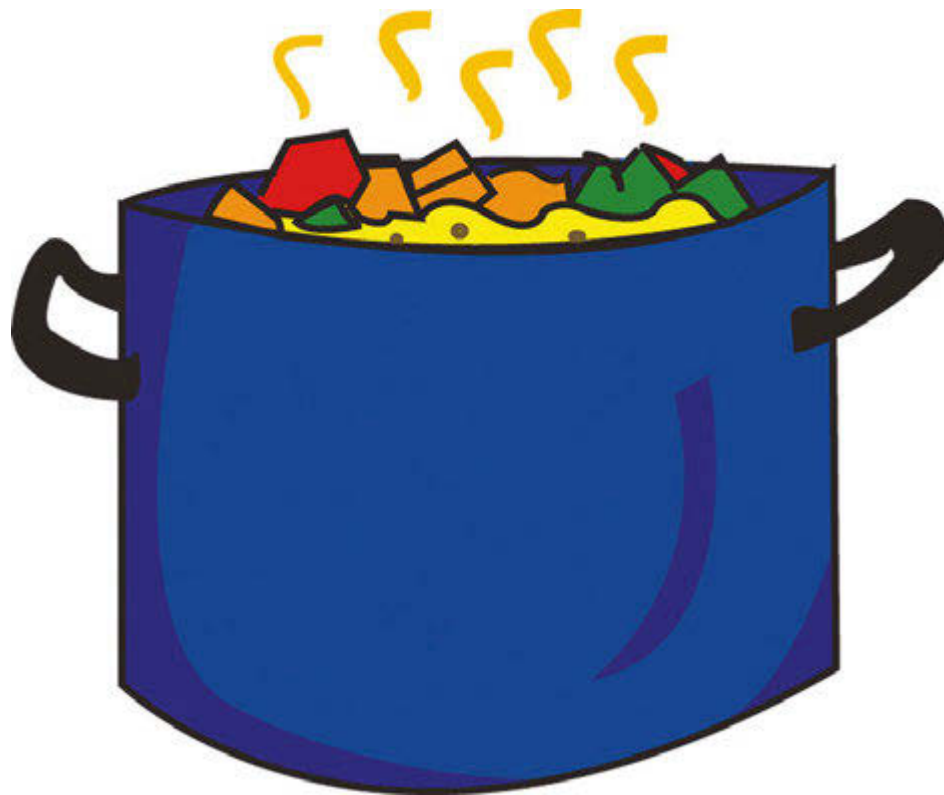
oy

boy



oi

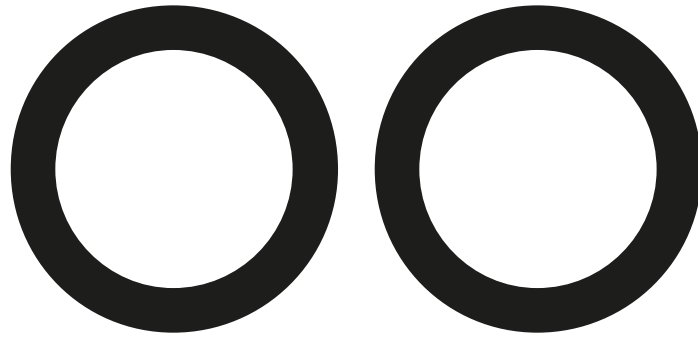
coin



ew

stew



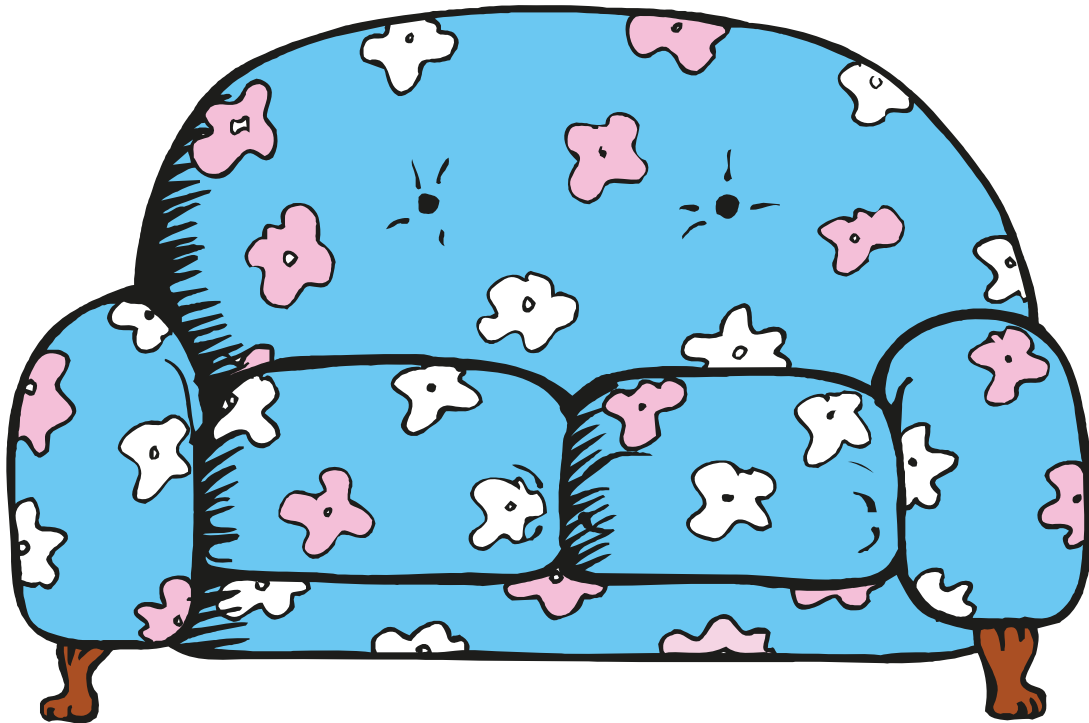


spoon



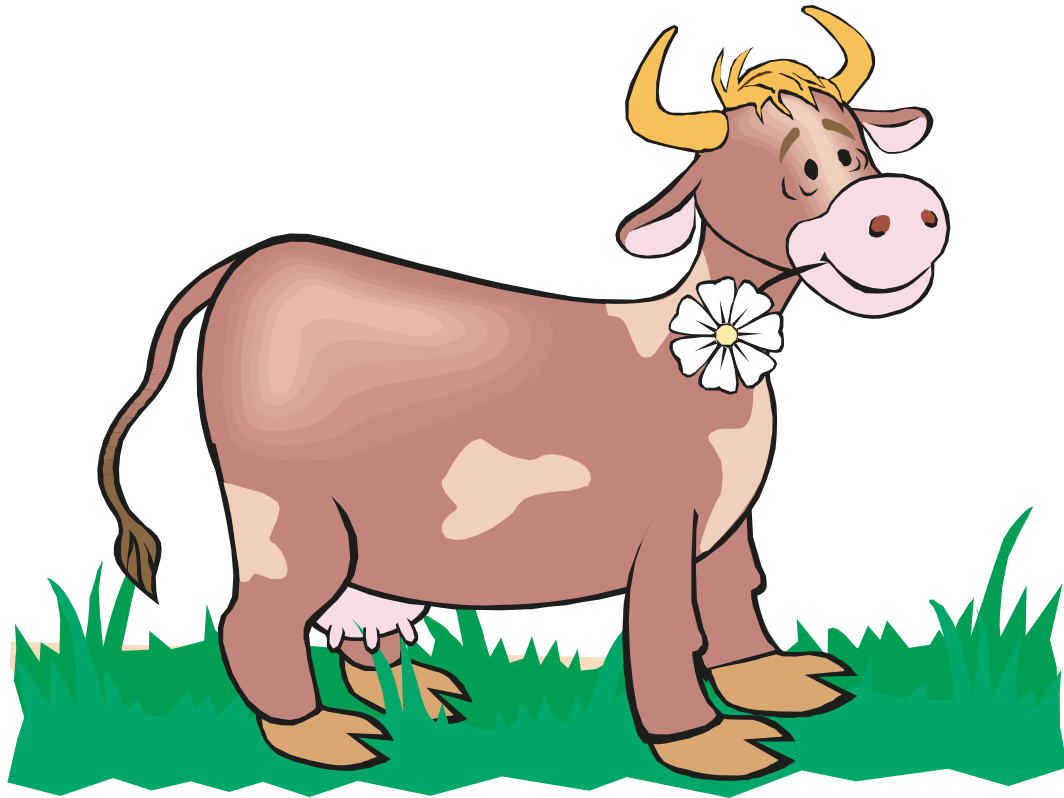
ph

phone



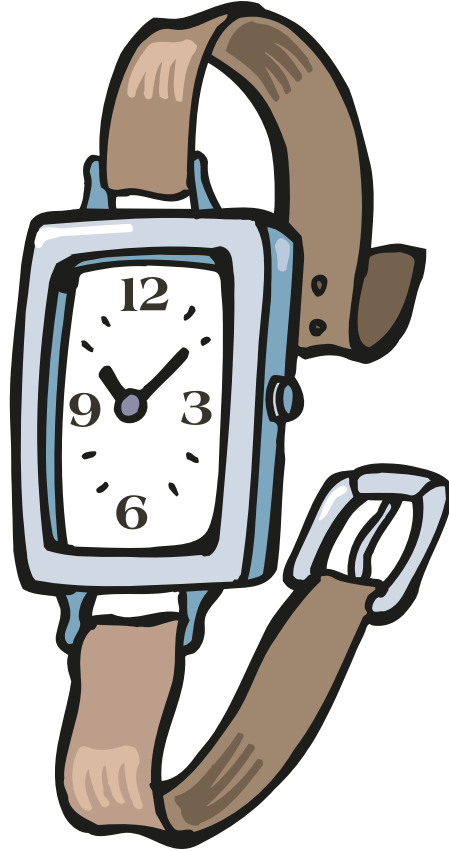
ou

couch



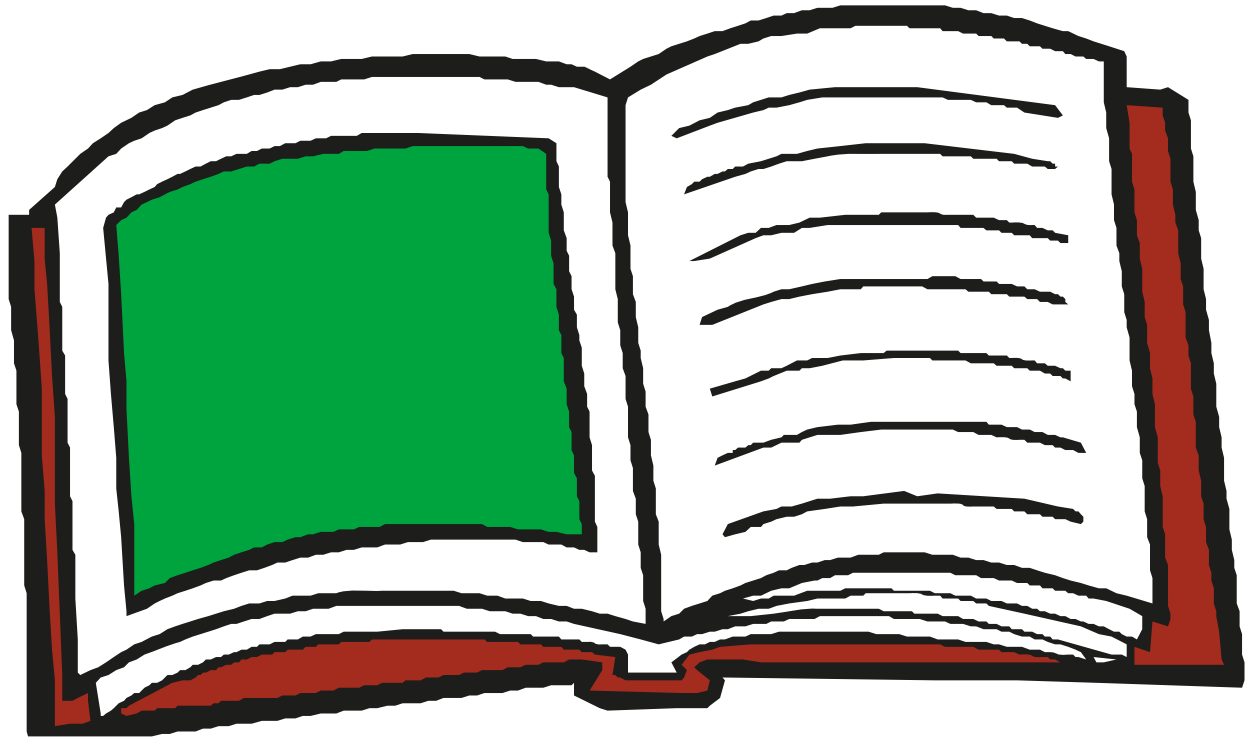
ow

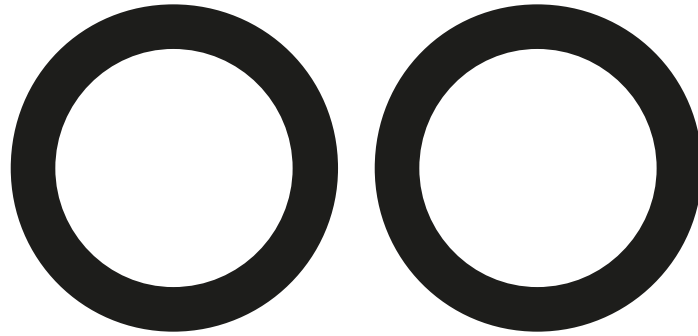
COW



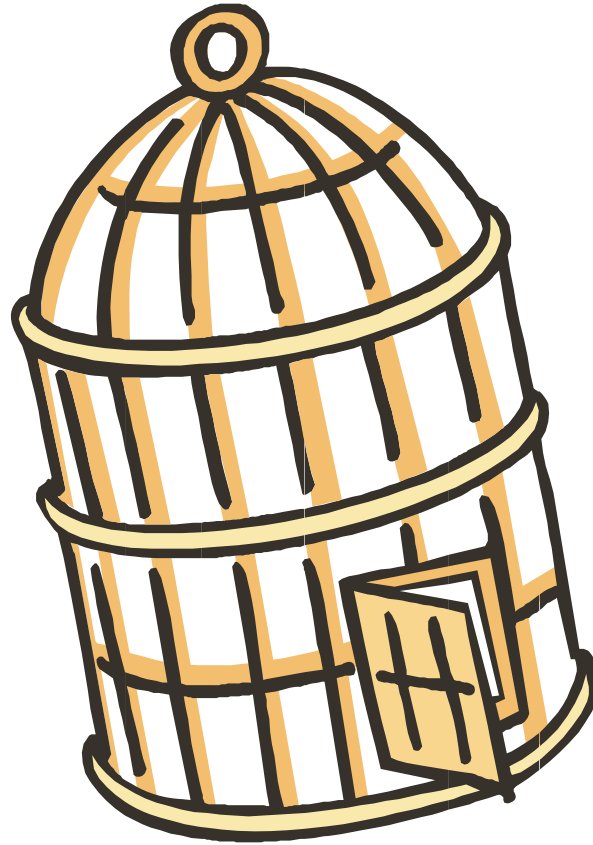
atch

watch



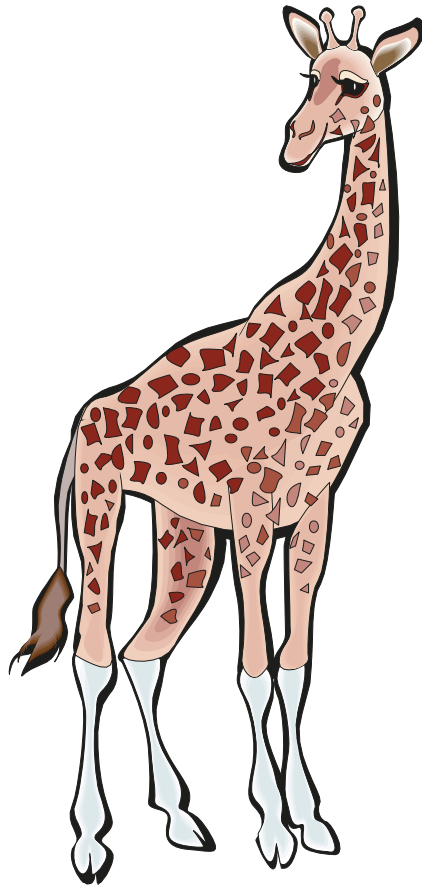


book



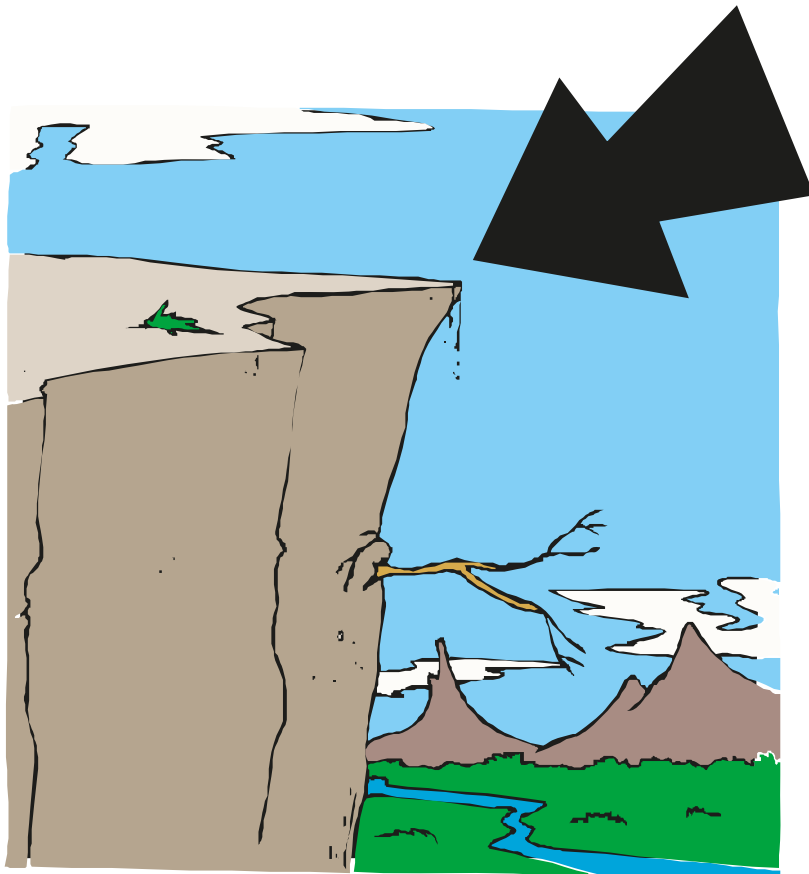
ge

cage



gi

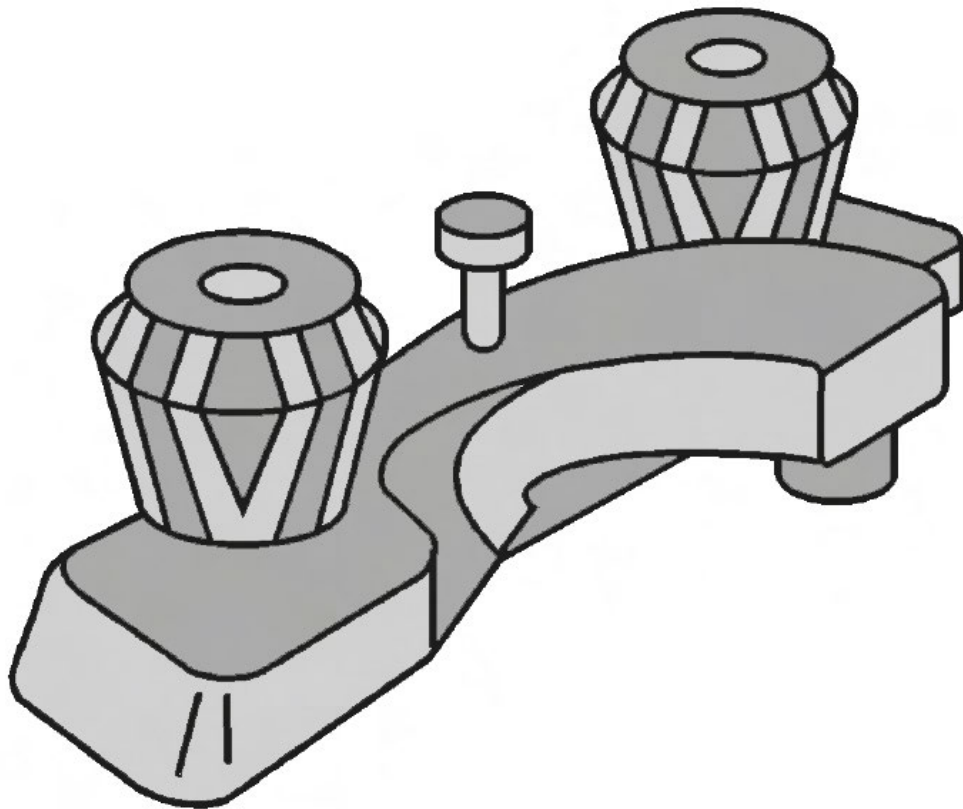
giraffe



edge

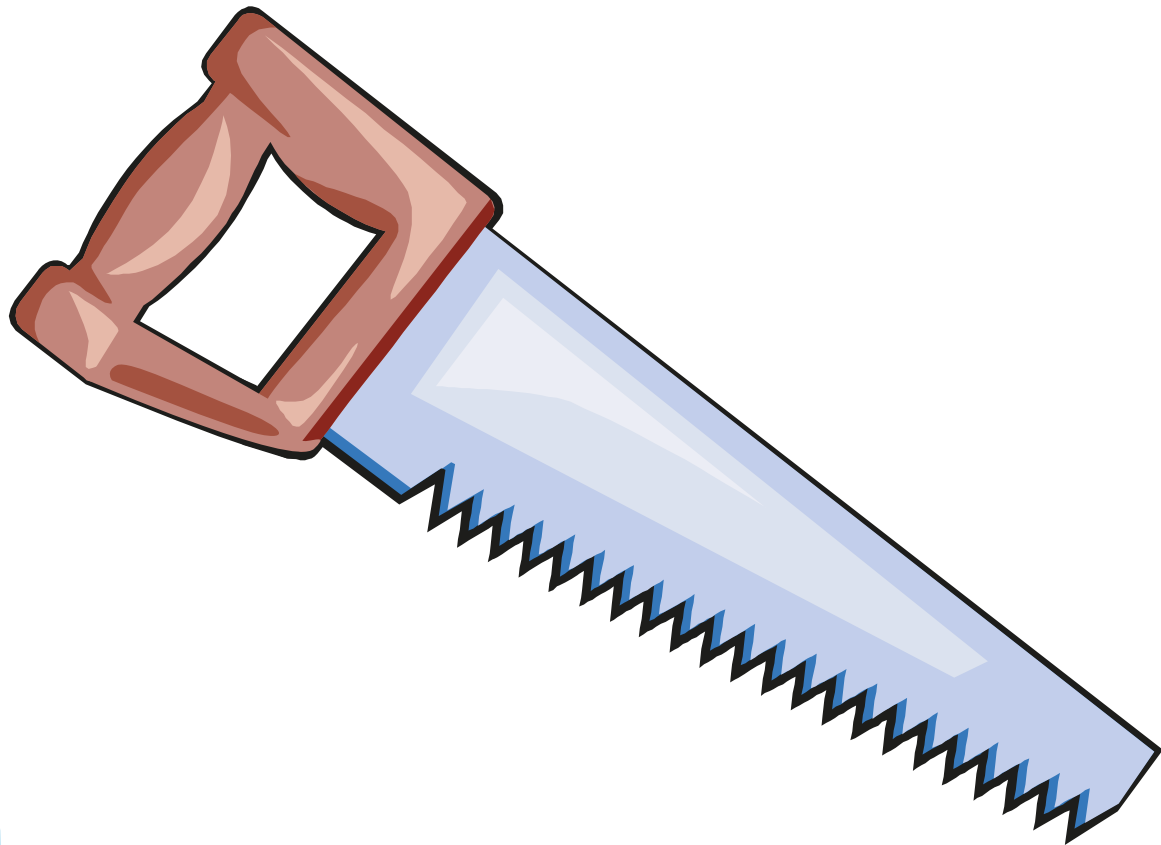


edge



au

faucet



© Mondo Publishing 2009

aw

SAW



wor

worm